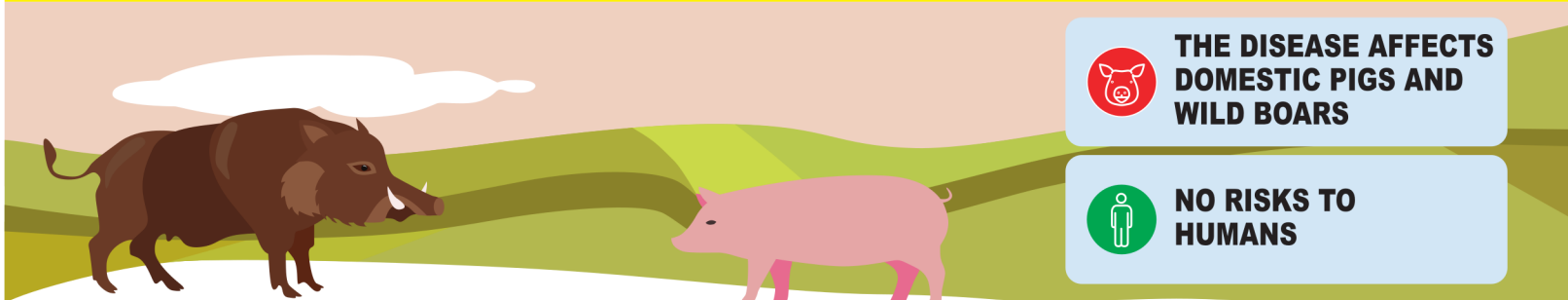


Restricted zone II



AFRICAN SWINE FEVER

INFECTED ZONE



THE DISEASE AFFECTS
DOMESTIC PIGS AND
WILD BOARS



NO RISKS TO
HUMANS



WHAT TO DO IF YOU FIND A WILD BOAR CARCASS



Collect the **geographical coordinates**



Take a **photo**



Contact the **local veterinary service**
tel. **051 6092124**



WHAT NOT TO DO



Touch and approach the **carcass**



Leave **litter or food waste** into the
environment



Feed the wild boars



Respect restricted zone II access rules and permitted activities.
You can download them through the QR code or from the african swine
fever page of the website Alimenti & Salute of Regione Emilia-Romagna.



Do not leave the footpath



Do not camp



Change and disinfect shoes after
outdoor activities; clean and disinfect
the wheels of means of transport



Keep your dog on a leash



Park in the designated areas or
at the side of the road



Respect the hunting rules provided
for this restricted zone

EVERYONE'S COOPERATION IS NEEDED TO CONTAIN THE SPREAD OF THE VIRUS